

1. INTRODUCTION	2
Aim	2
Methodology	2
2 PREVIOUS PRIORITIES	3 - 7
3 AN INTRODUCTION TO ASB IN CAMBRIDGE CITY	7
4 EMERGING ISSUES	8 - 16
5 CURRENT CRIME & INCIDENT LEVELS	17 - 19
6 RECOMMENDATIONS	20

1. Introduction

Aim

The aim of the Neighbourhood profile update is to provide an overview of action taken since the last reporting period, identify ongoing and emerging crime and disorder issues, and provide recommendations for future priorities and activity in order to facilitate effective policing and partnership working in the area.

The document should be used to inform multi-agency neighbourhood panel meetings and neighbourhood policing teams, so that issues can be identified, effectively prioritised and partnership problem solving activity undertaken.

Methodology

This document was produced using the following data sources:

- Crime data and incident data July 2010 to October 2010 and as a comparison data from March 2010 to June 2010 and July 2009 to October 2009.
- Information from Neighbourhood Policing Team November 2010.
- Community intelligence.
- Environmental Data from Cambridge City Council July - October 2010 and compared with same period last year.

2. Previous Priorities & Engagement Activity

Previous Priorities

At the neighbourhood panel meeting on 19th July 2010, the following issues were adopted as priorities. The tables below summarise action taken and the current situation regarding the priorities, which were set:

Speeding in City East	
Objective	This is a long running priority to reduce the speed of vehicles travelling across the East neighbourhood area.
Action Taken	<p>Following discussion at the last Area Committee meeting it was agreed to continue with speed checks at the locations identified and agreed by the meeting to be of most concern. Support from the County Council was to be sought to conduct a publicity campaign focussing on Coleridge Road.</p> <p>Police Community Support Officers (PCSOs) have continued with speed awareness patrols in the identified areas.</p> <p>All police constables on the neighbourhood team are now fully trained in the use of 'Ultralyte LTI 20-20' speed detection equipment. This took place in late November, when the equipment had undergone yearly calibration and a trainer was available.</p> <p>Police officers have conducted checks at the identified locations;</p> <ol style="list-style-type: none"> 1. Coleridge Road 2. Barnwell Road 3. Coldhams Lane 4. Wadloes Road 5. Perne Road <p>To date police officers have conducted a total of 7hours and 25 minutes of speed checks. A total of 1067 vehicles had their speed recorded.</p> <p>Of these vehicles, 8 drivers were given words of advice with regards to their speed (speeds recorded were under the threshold for prosecution) and 2 drivers have received letters following checks conducted by PCSOs who do not have</p>

	<p>enforcement powers to stop vehicles.</p> <p>Of all the vehicles stopped none were exceeding the speed limit for the road on which they were travelling.</p>
Current Situation	<p>East Neighbourhood Constables and PCSOs continue to conduct speed checks and enforcement at the agreed locations. Surveys undertaken remotely at various locations and previously reported to the committee have not shown there is a location that needs to be prioritised above others.</p> <p>The relatively low number of vehicles exceeding the limits means that the area does not qualify for additional enforcement support from the County Road Safety Partnership.</p> <p>Officers from the Force's Roads Policing Unit and Special Constabulary have been asked to assist where their deployments and staffing allows.</p> <p>The annual drink/drive campaign has begun and road safety is high on the agenda, especially with the weather extremes we have been experiencing and forthcoming Christmas celebrations.</p>
Continue or Discharge?	It is recommended that this priority is discharged.

Tackle youth related anti-social behaviour (ASB), drug misuse and criminal damage in the public areas of Thorpe Way and Jack Warren Green.	
Objective	<p>Continuing the work previously undertaken and focussing on:</p> <ul style="list-style-type: none"> Youth-related disorder and ASB in the public areas of the estate. Drug-related crime in both public areas and residential areas of the estate and the use of the area for the supply of drugs.
Action Taken	<p>Action taken was aimed:</p> <ul style="list-style-type: none"> To Identify and engage those individuals suspected of committing offences/ASB, taking positive action where necessary. Identify from analysis and public feedback target areas and times and provide high visibility patrols to reassure

	<p>communities and engage suspects.</p> <ul style="list-style-type: none"> • In the case of youth to consider diversionary / preventative activities appropriate to their age range and ability and to utilise both ABCs and tenancy agreements to seek to curb behaviour • Ultimately to seek to positively influence community feeling on the responsiveness and effectiveness of the police and local authority action and seek to decrease reports of criminal activity and ASB in the target locations. <p>Police Constables and PCSOs from East neighbourhood team have conducted over 90 hours of patrols specifically in relation to this priority.</p> <p>A warrant targeting the misuse of drugs was executed. This resulted in the seizure of herbal cannabis and approx £1300 cash. One person was arrested for possession with intent to supply drugs. This warrant was executed following numerous complaints to the council.</p> <p>Three people were given warnings under s59 Police Reform Act 2002 as to the anti-social use of a motor vehicle.</p> <p>Regular meetings held and information exchanged with City Homes officers regarding addresses and persons believed to be involved in drug related offences.</p> <p>Drop in event held with colleagues from Granta Housing at Ditton Court.</p> <p>Alcohol seized from an underage male.</p> <p>Details of the most prolific ASB offenders have been passed to the Anti-Social Behaviour officer at Parkside with a view to starting the acceptable behaviour contracts (ABCs).</p> <p>This priority was also allocated extra police divisional resources to supplement local officers during a concerted 2-week period of effort to impact the problem.</p>
<p>Current Situation</p>	<p>This estate is currently experiencing low levels of reported incidents in comparison to the previous periods. Those engaging in ASB have been identified and are likely to be</p>

	<p>asked to sign ABCs in relation to their behaviour.</p> <p>There were no issues reported to the NPT during Halloween, bonfire night or the recent snowy weather, times when it would be expected to see a rise in ASB.</p>
Continue or Discharge?	Suggested that this should be discharged.

Drug related ASB – York Street and surrounding area	
Objective	Tackle ASB linked to drug misuse in the York Street Playground and adjacent streets including Abbey Walk, New Street and Sleaford Street.
Action Taken	<p>Neighbourhood Policing Team officers have patrolled extensively in this area and have been regularly supported by members of the Special Constabulary.</p> <p>Patrols in uniform and plain clothes and have met with some success during this period. A number of well-known persons have been stopped and searched as a result of their suspicious behaviour.</p> <p>Officers have attended recent Neighbourhood Watch meeting in Ainsworth Street.</p> <p>Following recent patrols in this area a number of stolen bicycles were recovered from the back garden of a well-known cycle thief. This led to the arrest of three persons and the return, to their rightful owners, of 2 expensive bicycles.</p>
Current Situation	<p>Information is still being received about a number of addresses within this priority area, which require attention. The team are currently researching and building on this intelligence in order that search warrants can be obtained.</p> <p>Special Constabulary officers continue to be directed to this area in response to this priority.</p>
Continue or Discharge?	It is suggested that this is an area that requires continuing attention.

The Forum – Tiverton Way

At the last meeting the committee noted the improvements reported in terms of disruptive behaviour at the location and engagement with Anglia Ruskin University (ARU) and requested that the area received ongoing attention in light of a new term starting.

During this period the relationships with local residents, ARU and partner organisations have been further developed. A meeting with local residents was held in November and the Forum now has a Night Warden. ARU have been pro-active in addressing local concerns and reporting lines have been established to ensure good communication exists between all parties affected.

An Introduction to Anti-Social Behaviour (ASB) in Cambridge City

It has been noted from recent Cambridge City Neighbourhood Panel Meetings that Anti-social behaviour (ASB) issues are at the forefront of public concern. To address these concerns, this document will now mainly focus on ASB issues and will aim to give greater detail of the problems faced in each ward. As a result, included in this document will be a breakdown of ASB types as well as a summary of the issues raised by the public when reporting incidents. A summary of emerging issues within crime will still be provided.

When an incident is reported, it is given a Closure Class, which groups the incident under specific categories. The specific closure classes for those incidents defined as ASB are included in table.1

Table.1 ASB Closure Class Definitions

ASB	Description
AS02.2	Street Drinking
AS03.1	Begging/Vagrancy
AS04.1	Prostitution related activity
AS05.1	Abandoned Vehicle (not stolen/obstruction)
AS05.2	Vehicle Nuisance/Inappropriate Veh use
AS06.0	Noise
AS07.1	Litter/Drugs Paraphernalia
AS07.2	Inappropriate - Use/Sale/Possession of Fireworks
AS07.5	Rowdy/Nuisance - Neighbours
AS07.6	Rowdy or Inconsiderate Behaviour

AS08.1	Hoax Call to Emergency Services
AS09.1	Animal Problems
AS10.1	Malicious/Nuisance communication
AS10.2	Regular caller - HIST INFO
AS11.1	Trespass
AS12.1	Prejudice Incident

3. Emerging Issues

Cambridge East Trends

Offence levels across the neighbourhood have increased when compared to the previous period but decreased compared to the same period last year. This increase is reflected in a variety of crime types but most notably Violent Crime and Cycle Theft.

ASB incidents across the neighbourhood have also increased compared to the previous period but are below those experienced in the same period last year. Such increases may reflect seasonal trends with people spending more time outside in the warmer weather leading to more complaints of noise and rowdy behaviour.

Abbey Ward

- Total crime in Abbey Ward increased when compared to the preceding four months (388 vs. 391) but is substantially lower than the same period last year (388 – 471).
- Levels of dwelling burglary have seen a slight rise with 32 recorded offences, compared to 26 in the previous period. There were ten less offences than this time in 2009. There have been nine offences in the Riverside area particularly around the Stanley Road/Oyster Row/Garlic Row and Newmarket Road area. Entry has been gained during the daytime in the morning or overnight by forcing windows (some insecure) and various small electrical items such as computers, cameras, gaming consoles and mobile phones have been taken.
- Burglary Other offences have seen a large decrease compared to the preceding period with 10 offences recorded compared to 27 offences and remain lower than the same time last year. 70% of offences involved sheds or garages with bicycles and garden equipment appearing to be the main target. The majority of offences have been in July and August with a series of burglaries occurring in the Riverside area.

- Violent crime has increased compared to the preceding period although there are fewer offences than the same period last year. Common assaults and assaults occasioning actual bodily harm (ABH) accounted for 64% of all violent crime. There has been a decrease in robberies for this period from 11 to four. Offenders have been arrested and charged in 38% of violent crime offences.
- Theft from vehicles has increased since the previous period from 26 to 36 offences but levels and figures are below those recorded in 2009. Offenders are entering vehicles by smashing windows to target goods left on display. Satellite navigation systems, handbags and telephones are regular targets. Key repeat locations for offences were in Swann Rd, Pool Way, Newmarket Rd and Ditton Walk. Theft of vehicles, however, has decreased from 11 to 9 during this period including three motorcycles/mopeds.
- There were 53 thefts of cycles in this period compared to 49 offences in the previous period and 60 offences in the same period last year. Key locations have been the Riverside area with 21 offences occurring in Newmarket Rd, Cheddars Lane, Beche Rd, Saxon Rd and Abbey Rd alone.
- Thefts from shops have remained stable compared to the previous period (54 to 48) and are lower than last year. The majority of offences occurred at Tesco's on Cheddar Lane (15 recorded thefts) and the One Stop on Ditton Lane (9). Over two thirds (67%) of these offences have been detected.
- Criminal damage has recorded a slight rise since the last period and in comparison to last year a decrease. This is particularly concentrated around the area of Thorpe Way/Jack Warren Green and Ditton Fields includes a variety of offences such as smashed windows, and scratches/ denting to vehicles.
- Total ASB has decreased from 280 incidents in the previous period to 270 incidents in this period. This is also a decrease compared to the same period last year when there were 336 incidents. The two main areas for anti-social behaviour are in Ditton Fields (45) and Newmarket Rd (23). Ditton Fields incidents mainly relate to noise and rowdy nuisance behaviour as a result of neighbours playing loud music, having parties and youths causing disorder outside properties. The Newmarket Rd incidents relate to rowdy nuisance behaviour by youths outside McDonalds (5 incidents).

Environmental Issues

- Between July and October 2010 there were 8 reports of abandoned vehicles in the ward, compared with 11 during the same period the previous year. This included 3 vehicles, which were not on site following inspection and 2, which were later claimed by their owners. In addition, 2

vehicles were impounded on behalf of the DVLA for not having valid road tax and were subsequently destroyed following the owners' non-payment of the DVLA fine. There were no specific hotspots during either period.

- Between July and October 2010 there were 71 reports of flytipping in the ward, compared with 102 during the same period the previous year. There was sufficient evidence to issue two formal warning letters to domestic offenders. Hotspots during the 2010 period included Ekin Road 12 (20 during the same period last year), Dennis Road 6 (11 during the same period last year), Ann's Road 6 (not a hotspot during the same period the previous year), Helen Close 6 (9 during the same period last year) and Fison Road (5 during both periods).
- 30 derelict cycles were dealt with between July and October 2010, compared with 56 during the same period the previous year. Ekin Road (9), Riverside (7) and Occupation Road (3) were the hotspots during the 2010 period and hotspots during the same period the previous year included Latimer Close (13), Fison Road (6) Ditton Fields/Lane (5) and Riverside (4).
- Between July and October 2010, 10 needles were reported compared with 152 during the same period the previous year. During the 2010 period this included 6 needles, which were removed from toilets at Barnwell Road. During the same period last year, 12 needles were removed from Barnwell Road, primarily from bins close to the shops. Additional reports during the 2009 period included 116 needles, which were removed from Stourbridge Common, 17 from Newmarket Road and 5 from Latimer Close.

Petersfield Ward

- Total crime in Petersfield Ward has increased compared to the previous period (500 offences to 417 offences) and has increased compared to the same period last year (462 offences).
- There have been 35 dwelling burglaries in the current period, compared to 21 in the preceding one and 13 this time last year. There has been a small number of offences in the East Rd and York Street areas. Offences have occurred during the evening or overnight with entry commonly being gained by forcing doors and windows. Typically, small electrical items such as laptops, mobile phones and wallets have been taken.
- Levels of 'Burglary Other' have increased slightly for this period from 16 to 18 but remain similar to the figure of 17 recorded for the same period in 2009. Thirteen of these offences were burglaries other than a dwelling with a small number in Devonshire Rd, Hills Rd and East Rd. There were no particular trends other than small electrical items being stolen.
- Levels of violent crime have increased to 49 compared to 45 in the preceding period. However, this figure has shown an increase of 11

offences for the same period last year. Most offences (57%) were assaults occasioning actual bodily harm or common assaults. There are large numbers of offences in the Mill Rd area (18) with a number of crimes occurring at restaurants and takeaways. Levels of robbery have remained stable with only two offences.

- Levels of theft of vehicle crime have remained similar to the previous reporting period (6 v 4), although theft from motor vehicles has shown a rise from 19 offences to 32. Key locations for theft from vehicles were in York Street, Lyndewode Rd, East Rd and Glisson Rd. Offenders are smashing vehicle windows to steal documents, cash, wallets and satellite navigation systems. Theft from motor vehicle has reduced compared to the same period last year.
- Cycle theft has increased by 64 offences since the previous four months and is consistently higher than levels experienced between July and October last year. Kelsey Kerridge and Anglia Ruskin and Cambridge Parkside Pools remain key hotspots for cycle thefts in Petersfield.
- Thefts from shops have increased this period from 56 to 64, a decrease compared to 2009. Stores at the Beehive Centre accounted for 89% of thefts, particularly at Asda (25) and TK Maxx (20). In 79% of offences an offender was arrested and charged.
- Levels of criminal damage have decreased compared to those experienced in the last period and last year (28 compared to 43 previously). Damage was mainly towards vehicles such as broken wing mirrors, scratched bodywork and smashed windows (typically smashed windows in Norfolk Street, Norfolk Terrace, Gwydir St and Sturton Street.
- Levels of ASB in Petersfield have increased from 163 to 184 for this period and from 201 last year. The hotspot area for ASB is in Mill Rd with 22 incidents, majority of calls relate to disorder at residential properties and alcohol related incidents at a neighbouring licensed premises.

Environmental issues

- Between July and October 2010 there were 9 reports of abandoned vehicles in the ward, compared with 18 during the same period the previous year. This included 2 vehicles, which were not on site following inspection and one, which was later claimed by their owner. Three CLE26 notices were also issued to offenders on behalf of the DVLA for not displaying road tax on a public highway and will result in a fine issued by the DVLA. In addition, a further vehicle was impounded on behalf of the DVLA for not having valid road tax, but was subsequently released following the owner's payment of the DVLA fine. There were no specific hotspots during either period.

- Between July and October 2010 there were 86 reports of flytipping in the ward, compared with 96 during the same period the previous year. There was sufficient evidence to issue 16 formal warning letters to offenders as well as 7 verbal warnings. In addition, one case is currently pending further investigation. Hotspots during the 2010 period included Tension Road 14 (5 during the same period last year), Mill Road 13 (11 during the same period last year), St Matthew's Street 8 (7 during the same period last year), and Sleaford Street 5 (not a hotspot during the same period the previous year).
- 72 derelict cycles were dealt with between July and October 2010, compared with 94 during the same period the previous year. Mill Road (19), Covent Garden, St Matthews Street and Norfolk Street (each with 4) and Devonshire Road and Ditchburn Place (both with 3) were the hotspots during the 2010 period. Hotspots during the same period last year were Mill Road (46), York Terrace (8) and Norfolk Street and St Matthew's Street (both with 6).
- Between July and October 2010, 291 needles were reported compared with 403 during the same period the previous year. 200 Needles were removed from Mill Road Cemetery during the 2010 period, compared with 286 during the same period the previous year. Other reports included Petersfield Recreation Ground 30 (49 during the 2009 period), St Matthew's Street 19 (23 during the 2009 period), Devonshire Road 16 and Staffordshire Street 5 (21 during the same period last year).

Romsey Ward

- Total crime in Romsey Ward has remained relatively stable compared to the preceding period (254 vs. 264) and is significantly lower than the comparative period last year (365).
- Levels of dwelling burglary have fallen from 19 to 13 during the last four months, which is significantly lower in comparison to July to October in 2009. There are no clear geographical hotspots with offences being spread across the ward area. Several of the burglaries took place in the evening or overnight and entry to the property was commonly gained by insecure windows or through forcing them. Laptops, mini disc players and handbags/purses appear to be the most commonly stolen items.
- Levels of burglary other are similar compared to the preceding period and last year. Mill Rd and Thoday Street were the repeat locations for offences with a variety of items being stolen including bicycles, and tools.
- Although levels of robbery have remained consistent, levels of overall violent crime have risen slightly but are still below those seen last year. The majority of the offences were assaults and common assault (71%). Offences were typically a mixture of domestic related, and alcohol related. Many of the offences occurred in residential houses or in the

street in Mill Rd. Offenders have been arrested and charged in 25% of these offences.

- Cycle thefts have seen an increase this period with 65 offences compared to 45 in the preceding four months and 111 in the same period last year. Offences are predominantly in the streets off Mill Road closest to the City Centre although there were also five offences at Sainsburys on Coldhams Lane.
- Thefts from shops have decreased from 23 to 17 during July and October this year, five offences lower than the same period last year. Again ten offences occurred at Sainsburys and there was a further two at Tesco Express on Mill Road. Food and drink and alcohol were the most commonly stolen items. 18% of offences have resulted in a suspect being arrested and charged.
- Total ASB in Romsey Ward has increased from 196 to 208 this period but levels are below those of last year (228). Two areas for concern are Mill Rd (38 incidents) and Cromerty Place (34 incidents). Mill Rd issues relate to youth disorder, street drinking and begging. Cromerty Place incidents refer mainly to rowdy nuisance neighbour issues.

Environmental Issues

- Between July and October 2010 there were 12 reports of abandoned vehicles in the ward, compared with 20 during the same period the previous year. This included 3 vehicles, which were not on site following inspection and one, which was later claimed by their owner. Four CLE2/6 notices were also issued to offenders on behalf of the DVLA for not displaying road tax on a public highway and will result in a fine issued by the DVLA. In addition, three further vehicles were impounded on behalf of the DVLA for not having valid road tax and were subsequently destroyed following non-payment of the DVLA fine. Cavendish Road (4) was a hotspot during the 2010 period and Argyle Street was a hotspot during the same period last year, also with 4.
- Between July and October 2010 there were 44 reports of fly tipping in the ward, compared with 36 during the same period the previous year. There was sufficient evidence to issue 9 formal warning letters to domestic offenders as well as one verbal warning. Sedgwick Street (5) and Mill Road, Catharine Street, Cromwell Road, Seymour Street and Thoday Street (all with 4). Hotspots during the 2009 period were Thoday Street (5), Seymour Street/Court and Sedgwick Street (both with 4) and Mill Road (3).
- Between July and October 2010 and the same period the previous year, 10 derelict cycles were dealt with. Mill Road (3) was a hotspot during the 2010 period, but there were no specific hotspots during the same period the previous year.

- Between July and October 2010, 102 needles were reported compared with 75 during the same period. This included 65 needles in Brooks Road, 52 of which were removed on one occasion in rubbish, 26 in Seymour Street and 6 from Coldham's Lane. Needle Reports during the 2009 period included 41 in Burnside, 20 from Romsey Recreation Ground July - October 2010 with data used between the same period the previous year to act as a comparison. and 5 from Hobart Road and Mill Road.

Coleridge Ward

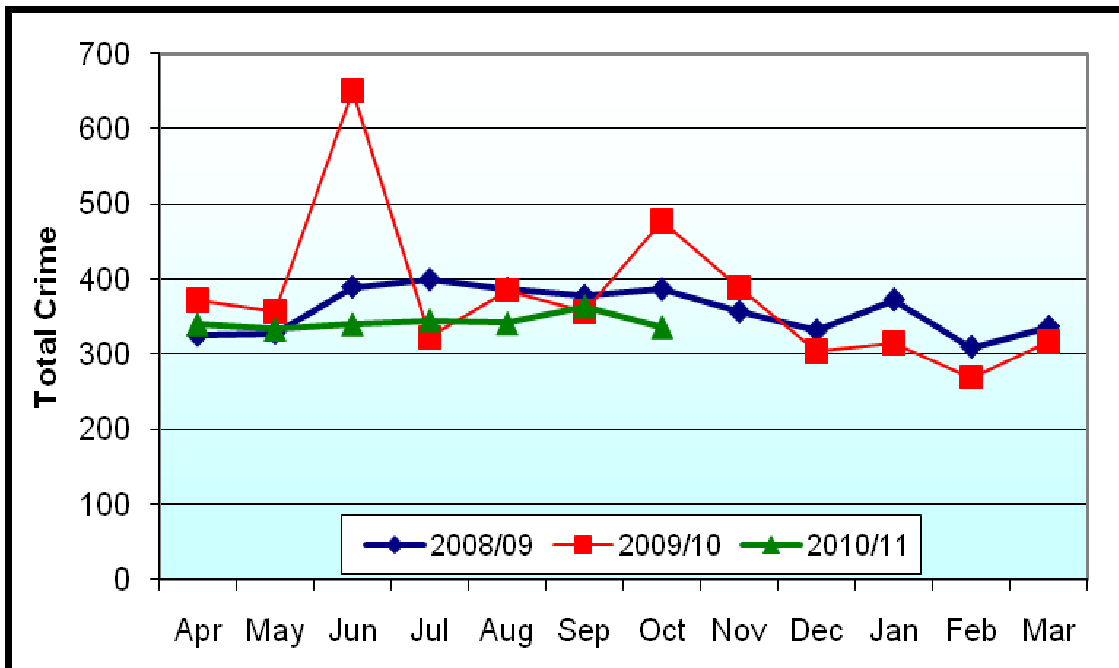
- Total crime in Coleridge Ward has decreased this period from 257 to 244, and levels remain similar to those experienced in the equivalent period last year (243).
- Levels of dwelling burglary have fallen since the last period from 17 to 6 and are still lower than the 13 experienced between July and October in 2009. Of the six offences the majority of them have occurred in or near Cherry Hinton Road, one has been a distraction burglary with the offender claiming to be from the gas board and in two burglary offences the vehicles have been stolen.
- Levels of 'burglary other' have decreased from 13 to 9 offences for the same period in 2010, with sheds or garages predominantly being targeted. A variety of items were taken particularly food and drink and bicycles.
- Levels of violent crime have remained at a similar level with 54 offences compared to 56 in the preceding months and 39 last year. Cherry Hinton Rd and the Leisure Park remains a hotspot for offences, many of which appear to be related to the night-time economy and consumption of alcohol. Most offences have been common assaults or assaults occasioning actual bodily harm.
- Whilst thefts of vehicles are remained quite stable, levels of thefts from vehicles have increased from 6 in the previous period to 19. Four offences occurred at Cambridge Leisure Park and three offences in Cherry Hinton Rd. Offenders have smashed windows and stolen fuel.
- Cycle thefts have increased from 47 to 64 for this period but are still lower than the comparative period last year when there were 75 offences. Hotspots continue to reflect where the greater proliferations of cycles are such as the Leisure Park, Cherry Hinton Rd and the schools and colleges (Hills Road, Coleridge and St Bedes).
- ASB in Coleridge Ward has decreased since the last period from 234 to 159 and is still below the levels seen last year of 202. Cherry Hinton Road has recorded 29 incidents of ASB which relate to alcohol related behaviour and rowdy nuisance behaviour by youths.

Environmental Issues

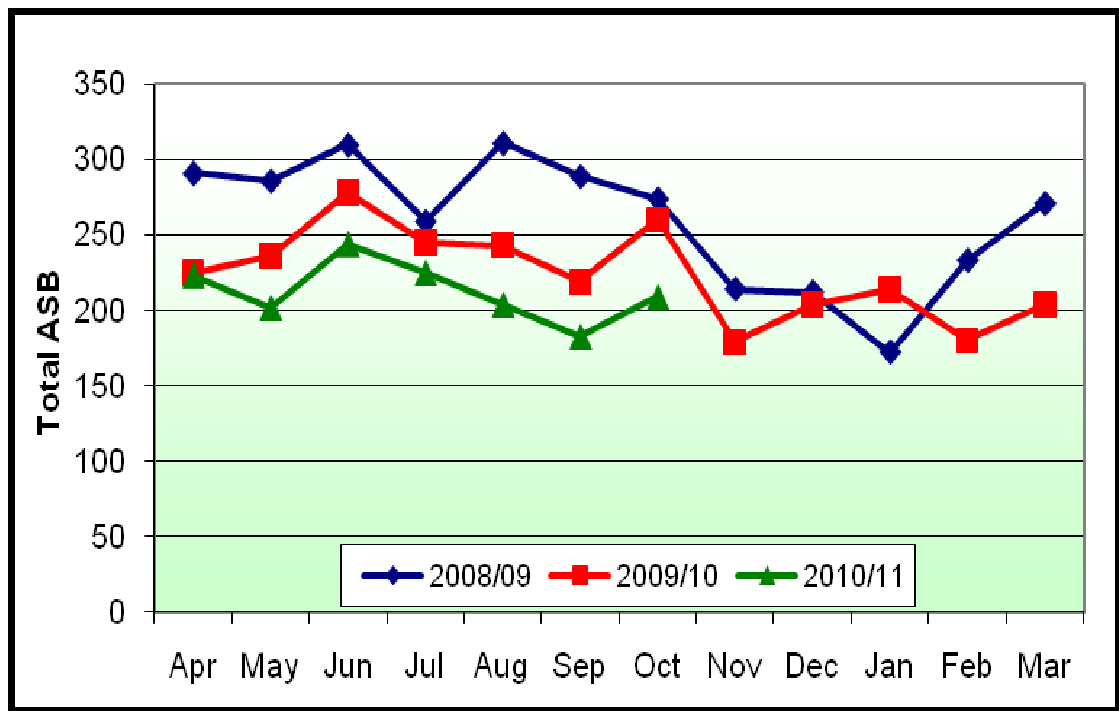
- Between July and October 2010 and the same period the previous year, there were 13 reports of abandoned vehicles in the ward. This included 6 vehicles, which were not on site following inspection and 2, which were later claimed by their owners. One CLE26 notice was also issued to an offender on behalf of the DVLA for not displaying road tax on a public highway and will result in a fine issued by the DVLA. In addition, 2 vehicles were impounded on behalf of the DVLA for not having valid road tax and were subsequently destroyed following the owners' non-payment of the DVLA fine. Rustat Avenue/Road was a hotspot during the 2010 period with 3 and was also a hotspot during the same period last year with 5.
- Between July and October 2010 there were 36 reports of flytipping in the ward, compared with 41 during the same period the previous year. There was sufficient evidence to issue a formal warning letter to a domestic offender. Another case is currently pending further investigation. Hotspots during the 2010 period were Ashbury Close, Hobart Road, Rustat Road and Suez Road (each with 3). Hotspots during the same period last year were Hobart Road (6), Asbury Close and Corrie Road (both with 3).
- 22 derelict cycles were dealt with between July and October 2010, compared with 13 during the same period the previous year. Mamora Road (10) and Lichfield road (3) were the hotspots during the 2010 period. There were no specific hotspots during the same period the previous year.
- Between July and October 2010, 60 needles were reported compared with 32 during the same period the previous year. The majority during the 2010 period were reported at Coleridge Recreation Ground, whereas all needles during the 2009 period were removed from Budleigh Close.

4. Current Crime and Anti-Social Behaviour Incident Levels

Total Crime



Total Anti-Social Behaviour



Crime and Anti-Social Behaviour Incident Levels in the Cambridge East Neighbourhood, by Ward

			Dwelling Burglary	Other Burglary	All Violent Crime (excl. Robbery)	Robbery	Theft of Vehicle	Theft from Vehicle	Cycle Theft	Theft from Shop	Criminal Damage	Other Crime	Total Crime	Total ASB
N'hod	City East	July 10 – Oct 10	86	48	227	12	19	107	373	156	130	228	1386	821
		Mar 10 – Jun 10	83	64	203	27	23	68	268	140	169	284	1329	873
		July 09 – Oct 09	75	57	213	12	24	142	362	173	184	299	1541	967
Wards	Abbey	July 10 – Oct 10	32	10	80	4	9	36	53	52	54	58	388	270
		Mar 10 – Jun 10	26	27	67	11	11	26	49	51	48	75	391	280
		July 09 – Oct 09	22	17	88	7	10	40	60	74	59	94	471	336
	Petersfield	July 10 – Oct 10	35	18	49	2	6	32	191	64	28	75	500	184
		Mar 10 – Jun 10	21	16	45	5	4	19	127	56	43	81	417	163
		July 09 – Oct 09	13	17	38	2	1	56	116	69	47	103	462	201
	Romsey	July 10 – Oct 10	13	11	44	4	2	20	65	17	28	50	254	208
		Mar 10 – Jun 10	19	8	35	6	6	17	45	23	39	66	264	196
		July 09 – Oct 09	27	12	48	2	6	36	111	22	48	53	365	228
	Coleridge	July 10 – Oct 10	6	9	54	2	2	19	64	23	20	45	244	159
		Mar 10 – Jun 10	17	13	56	5	2	6	47	10	39	62	257	234
		July 09 – Oct 09	13	11	39	1	7	10	75	8	30	49	243	202

ASB Incident Types in the City East Area Neighbourhood, by Ward

Please Note

Incident levels for each of the wards may not be consistent with the official figures that will be published by the Force and Home Office. This is because the data system used to draw the level of detail needed for the ASB type breakdown for this report may not contain precise locations due to the way incidents are reported e.g. ASB reported where ward boundaries lie could initially be recorded in the neighbouring ward but subsequently corrected.

The figures should only be used as a guide and not regarded as official statistics for publication.

			Abandoned Vehicle	Animal Problems	Begging/Vagrancy	Criminal Damage	Hoax call to emergency services	Litter	Malicious/Nuisance Communication	Noise	Prejudice Incident	Prostitution	Regular Caller – Hist Info.	Rowdy & Inconsiderate Behaviour	Rowdy/Nuisance Neighbours	Street Drinking	Trespass	Vehicle related nuisance/Inappropriate Vehicle use	Violence	Grand Total
N'Hood	City East	<i>July 10 – Oct 10</i>	77	3	15	0	11	5	52	81	4	3	1	477	131	13	2	64	0	939
		<i>Mar 10 – Jun 10</i>	38	0	22	2	9	3	50	125	5	0	7	416	103	9	1	71	3	864
Wards	Abbey	<i>July 10 – Oct 10</i>	15	1	1	0	3	0	21	20	3	1	0	139	40	4	1	25	0	274
		<i>Mar 10 – Jun 10</i>	18	0	3	1	2	1	13	31	2	0	1	117	49	0	0	36	1	275
	Petersfield	<i>July 10 – Oct 10</i>	9	0	6	0	0	2	12	12	0	0	0	117	15	5	1	6	0	185
		<i>Mar 10 – Jun 10</i>	4	0	10	1	1	0	5	21	0	0	0	89	17	7	0	9	1	165
	Romsey	<i>July 10 – Oct 10</i>	13	0	4	0	6	2	7	34	0	0	0	90	37	3	0	11	0	207
		<i>Mar 10 – Jun 10</i>	11	0	9	0	6	2	13	9	3	0	0	108	18	1	1	12	1	194
	Coleridge	<i>July 10 – Oct 10</i>	7	0	4	0	2	0	6	13	0	0	1	90	21	1	0	12	0	157
		<i>Mar 10 – Jun 10</i>	5	0	0	0	0	0	19	64	0	0	6	102	19	1	0	14	0	230

6. Recommendations

The following Neighbourhood Priorities are recommended for consideration:

1. Continue to address concerns of drug misuse and supply of drugs in the York Street area.